

Charter School Directors' Meeting

Monday, February 12, 2018



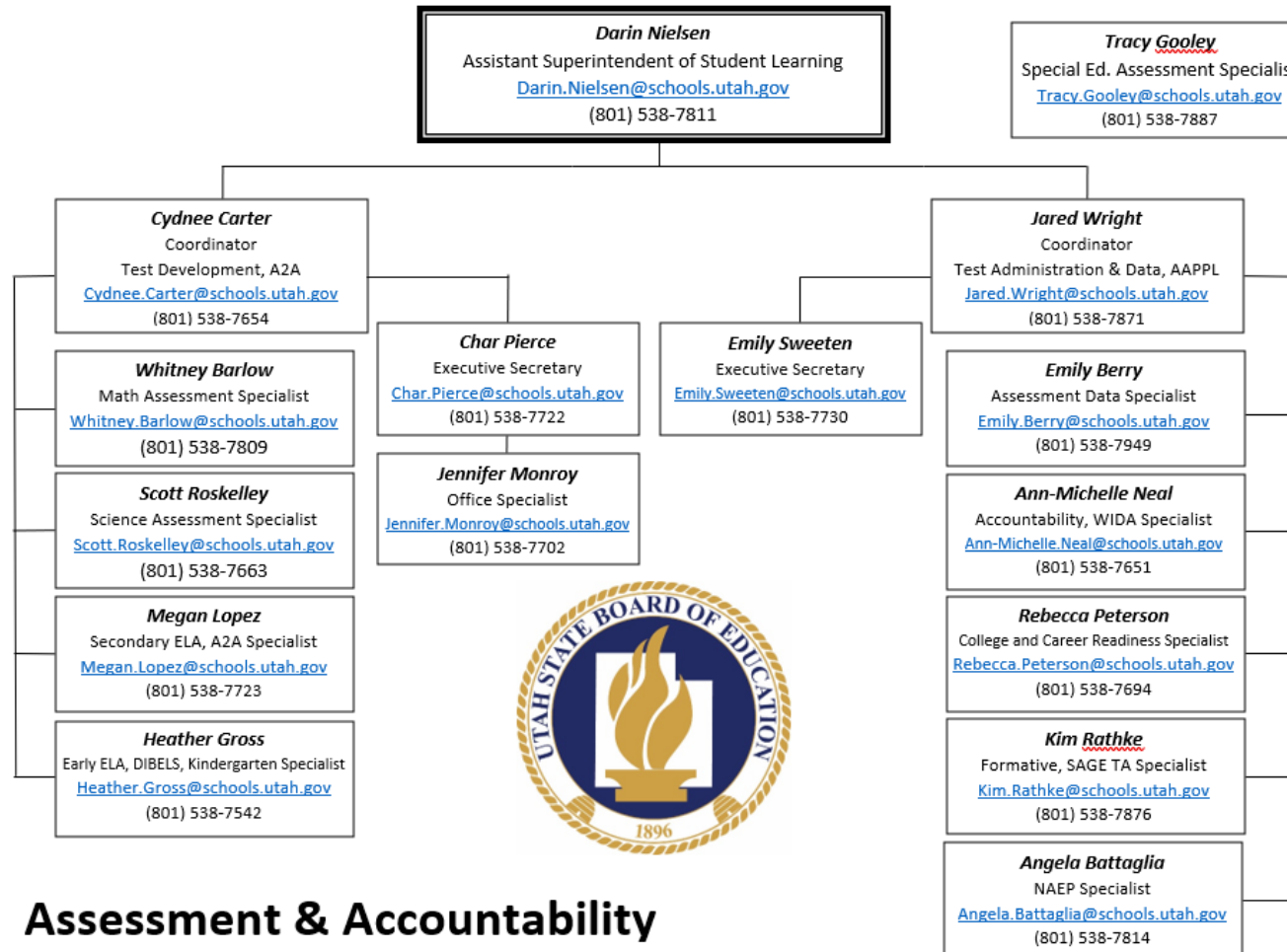
Darin Nielsen

- Assistant Superintendent of Student Learning
- Responsibilities:
 - CTE, Teaching & Learning, Assessment & Accountability
- History
 - Utah State University
 - Teton High School
 - Box Elder School District – 21 years
 - Counselor, Elementary Principal, Secondary Curriculum Specialist, CTE Director, Assessment & Professional Development Director, Assistant Superintendent/Curriculum



Assessment & Accountability Org Chart

Assessment & Accountability Org Chart

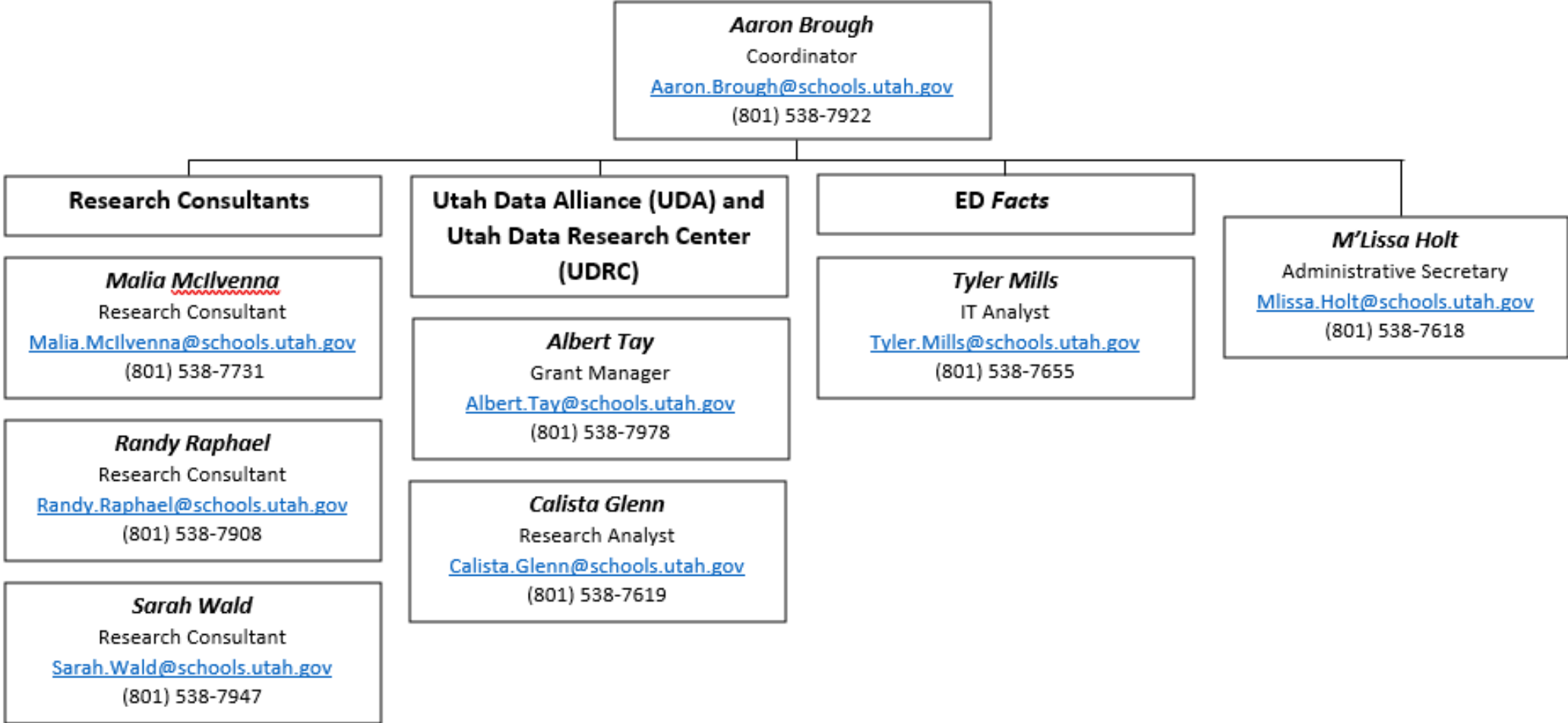


Assessment & Accountability



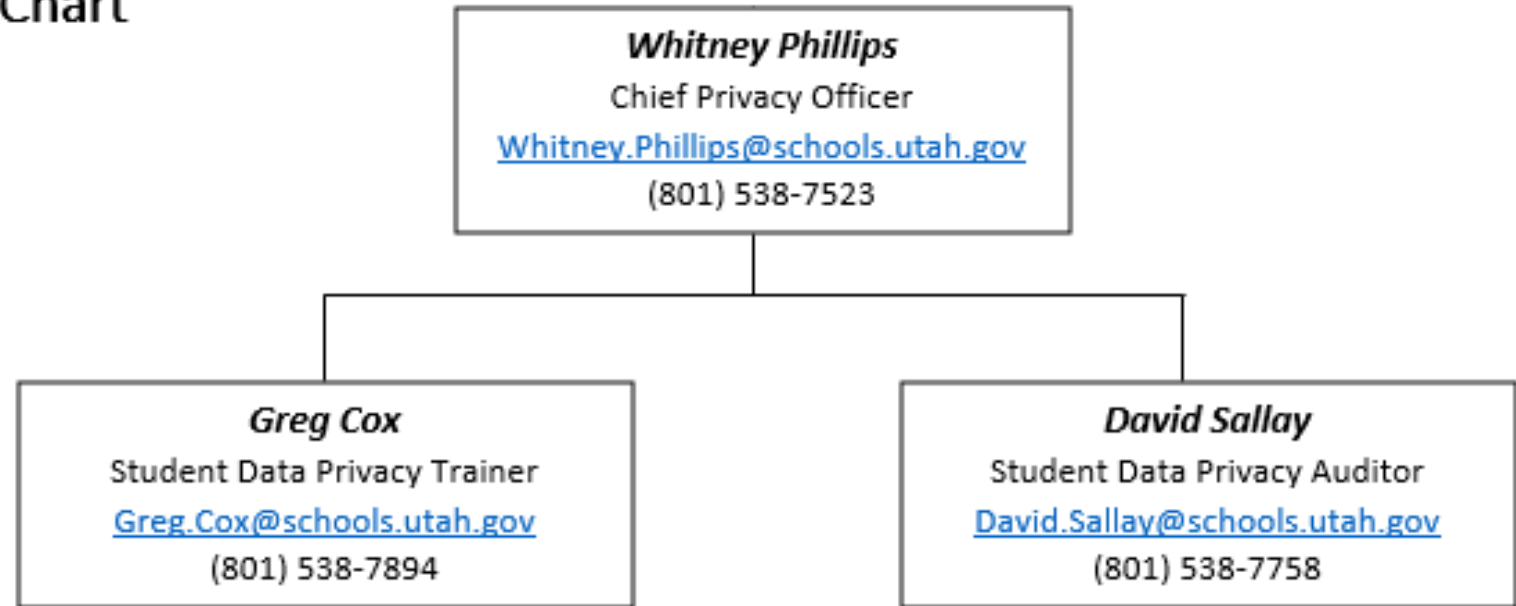
Data and Statistics Org Chart

Data & Statistics Org Chart



Student Data Privacy Org Chart

Student Data Privacy Org Chart

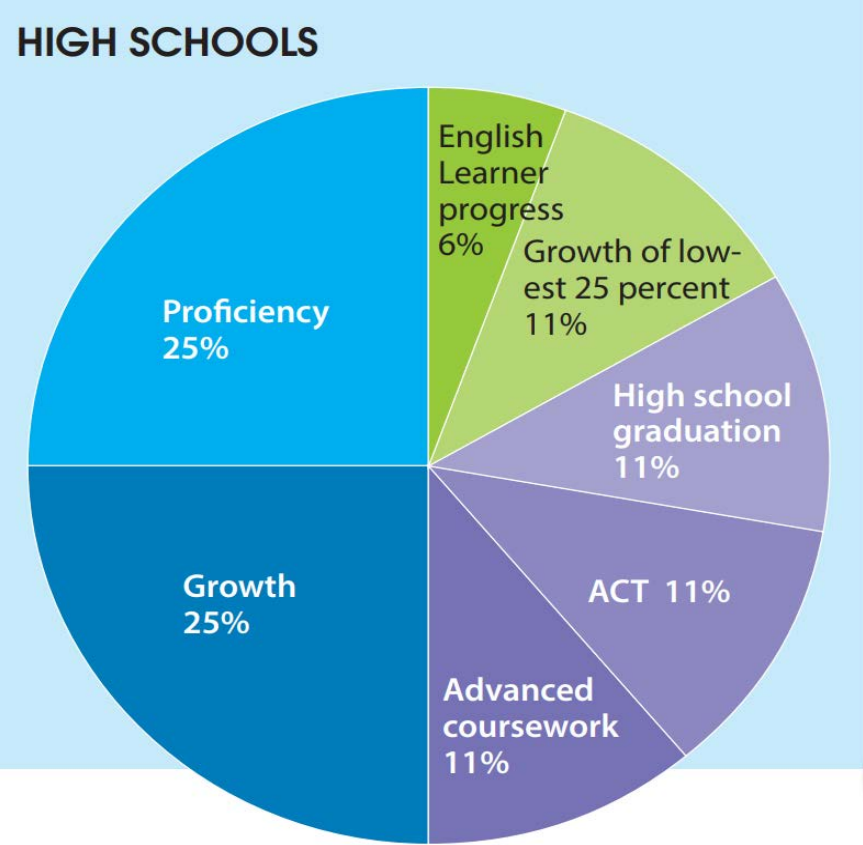
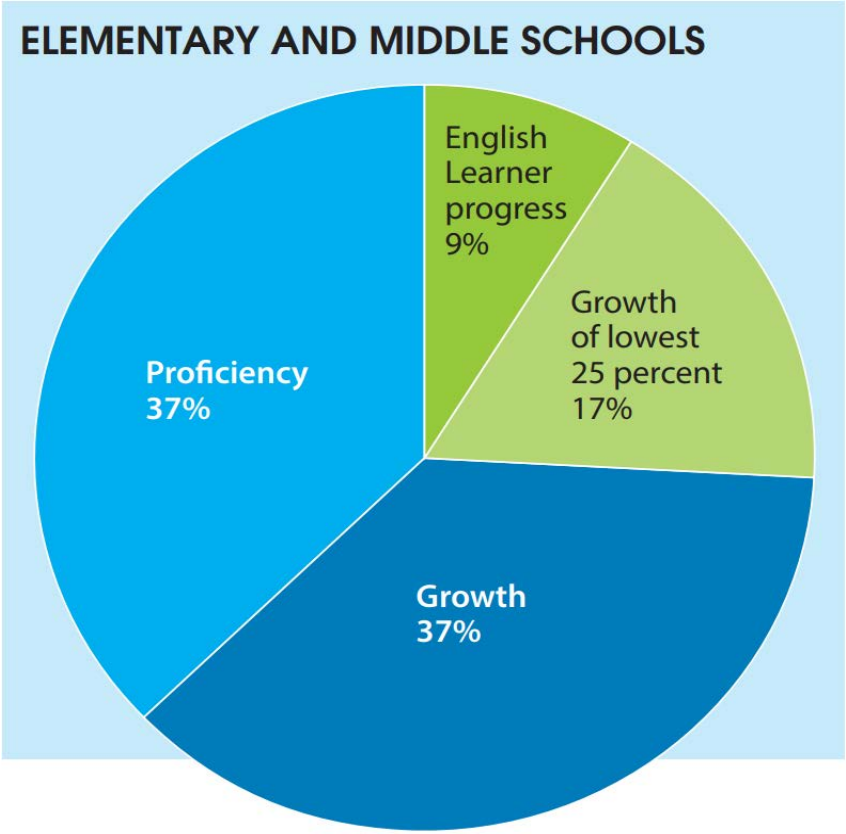


ESSA

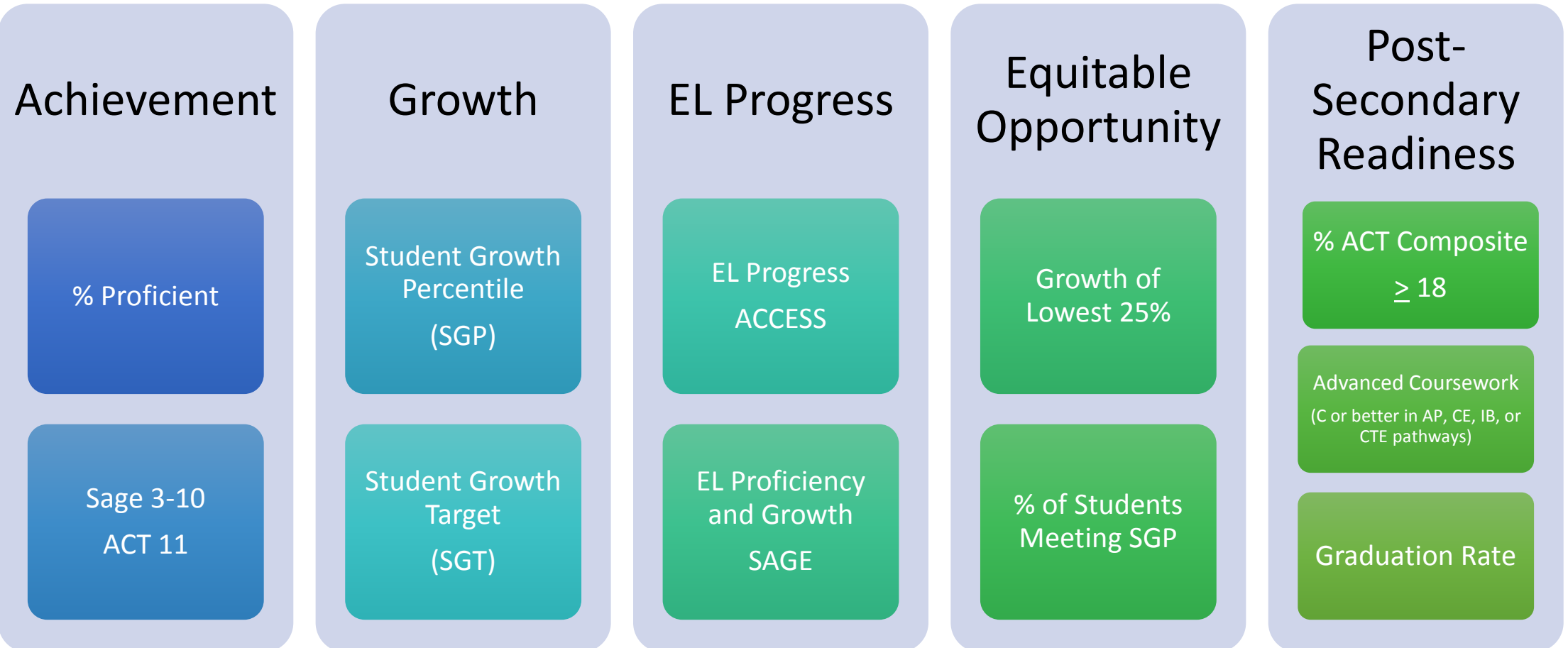
- Being resubmitted on February 14, 2018.
- Requesting a waiver to the 95% participation calculation requirement (public comment period will open by the end of this week)
- Changes to school accountability calculations
- New school report card design – expected to be used in 2018 reporting
- 6-8 SEEd assessment is in operational field test. Data will not be available for these assessments until fall of 2018



legislative requirements – revised accountability system



ESSA Accountability Indicators



legislative requirements

- A { • School represents an exemplary school
- B { • School represents a commendable school
- C { • School represents a typical school
- D { • School represents a developing school
- F { • School represents a critical needs school



General Assessment Updates

- Questar contract accepted – February 8, 2018.
- 9-10 assessment RFP closed January 15th. The scoring committee will make a decision in February.
- The alternate assessment will not change during the 18/19 school year. We will continue to use the DLM. We intend to open an RFP for a 3-11 grade alternate assessment in the coming months.
- Removal of writing for grades 9-10 in 2017-2018 school year.
- Addition of writing to the statewide ACT administration
- KEEP Assessment (Kindergarten Entry and Exit Profile)



Assessment Challenges

- Assessment scoring and changes that have been made to writing in ELA.
- Timeline for implementing the new assessment systems for 18/19.
- Increasing numbers of student opt-out (parent exclusion).
- Understanding how to implement the recent amendment to R277-404 by the USBE.



R277-404-6 update

In accordance with Subsection 53A-15-1403(1), an LEA shall reasonably accommodate a parent's or guardian's request to allow a student's demonstration of proficiency on a state required assessment to fulfill a requirement in a course.

School Leadership Working Group

- Analyze current efforts and programs that are improving school leadership.
- Create an implementation timeline for revised educational leadership license/credential.
- Review and recommended improvements in educational leadership induction.
- Bring recommendations to the Board for revised educational leadership license/credentials, standards for leader induction as well as supports to improve school leader quality.

